

FOR LEASE

2149 Avon Industrial
Rochester Hills



Office/Light Industrial

Local Ownership and Management

Features

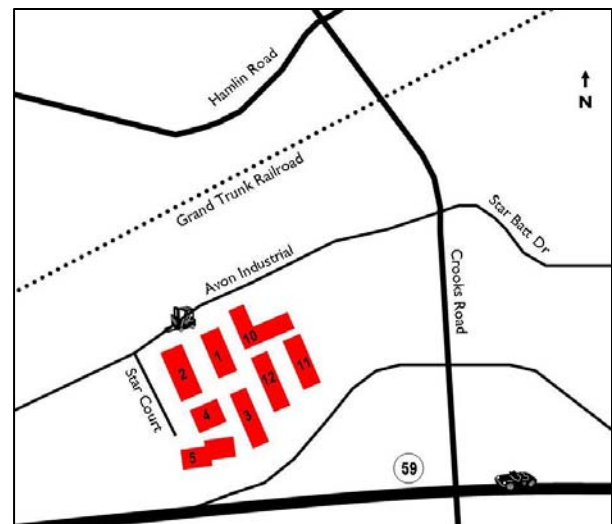
- 6,300 SF
- 2,507 SF Office
- 2 OHDs
- 14' – 18' Clearance
- Newly Renovated Exterior & Landscaping
- Can Build Office to Suit
- Rochester Hills SmartZone
- Can be combined with neighboring units for up to 16,990 sf

Location

- Northwest corner of M-59 & Crooks
- Conveniently Located to M-59 & I-75

Leasing

- Fast Occupancy
- Flexible Lease Terms
- Competitive Rates - \$4.95 gross / \$2,599/mo.



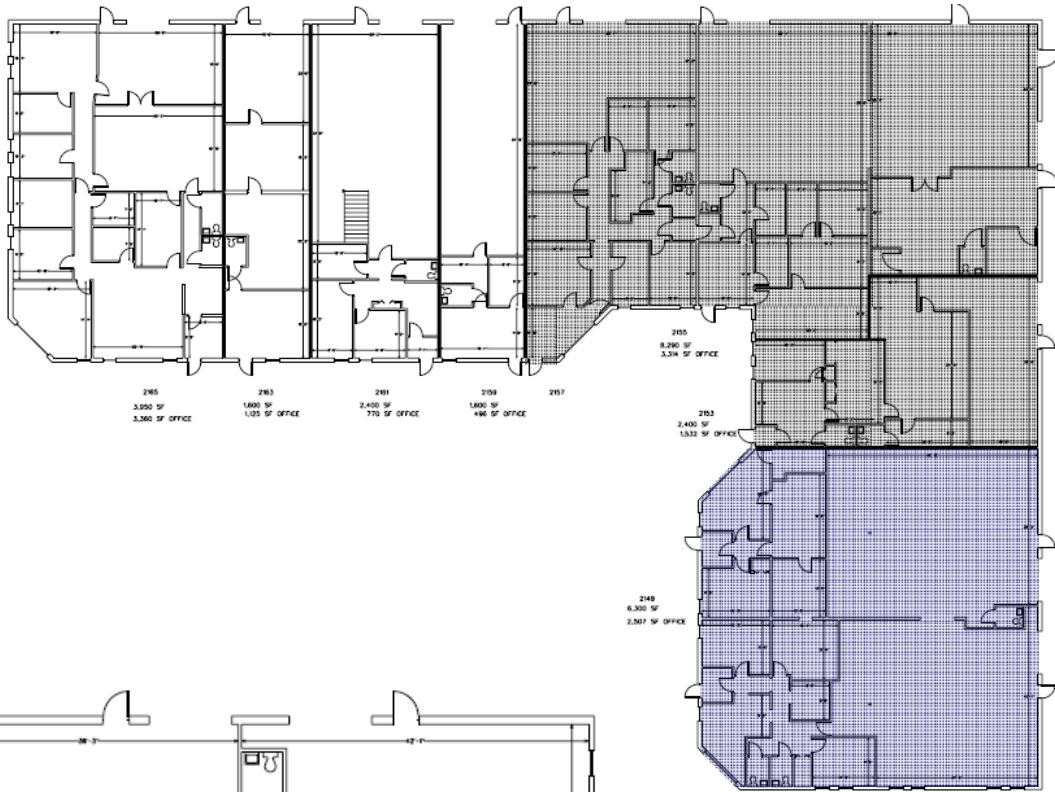
Please contact:

Tyson Butts
Corporate Leasing Manager
248.331.0215
tbutts@pa-cres.com

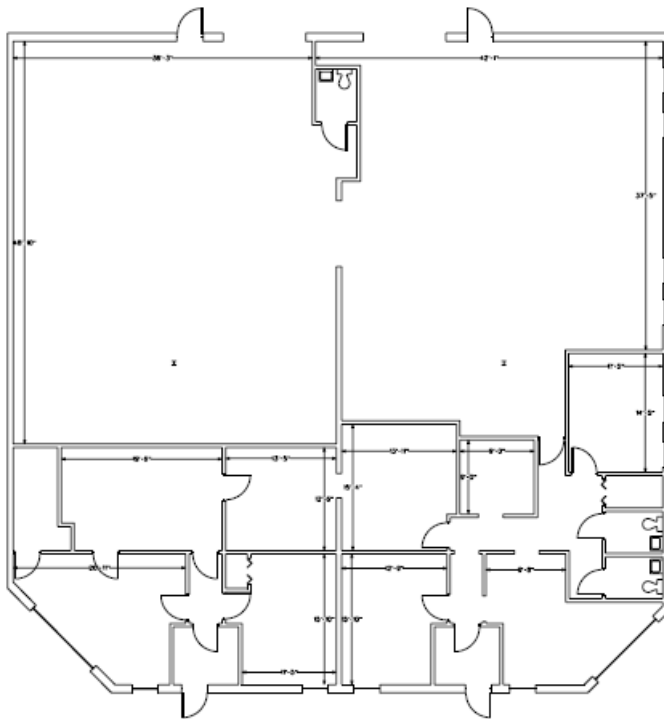


3000 Town Center
Suite 2222
Southfield, MI 48075
248.331-0215
248.358-5300 f
www.zicorproperty.com

Information contained herein is believed to be accurate but is not warranted as to accuracy and may change or be updated without notice. Seller or landlord makes no representation as to the environmental condition of the property and recommends Purchaser's or Tenant's personal investigation.



Can be combined with neighboring units for up to 16,990 SF



2149
6,300 SF
2,507 SF OFFICE

Building 10

