

# FOR LEASE

2183 Avon Industrial,  
Rochester Hills



Office/Light Industrial

Local Ownership and Management

## Features

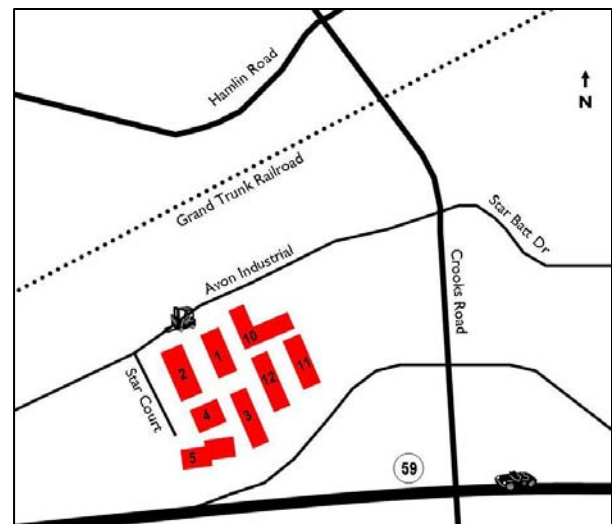
- 1,600 SF
- 407 SF Office
- 1 OHD
- 14' – 18' Clearance
- Newly Renovated Exterior & Landscaping
- Can Build Office to Suit
- Rochester Hills SmartZone

## Location

- Northwest corner of M-59 & Crooks
- Conveniently Located to M-59 & I-75

## Leasing

- Fast Occupancy
- Flexible Lease Terms
- Competitive Rates - \$7.50 gross / \$1,000/mo.



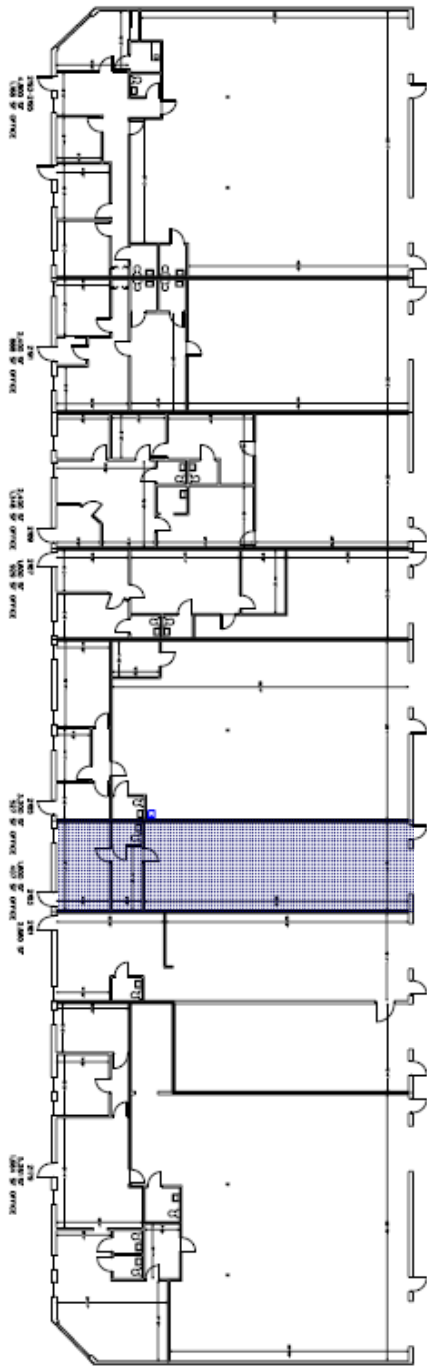
## Please contact:

Tyson Butts  
Corporate Leasing Manager  
248.331.0215  
tbutts@pa-cres.com

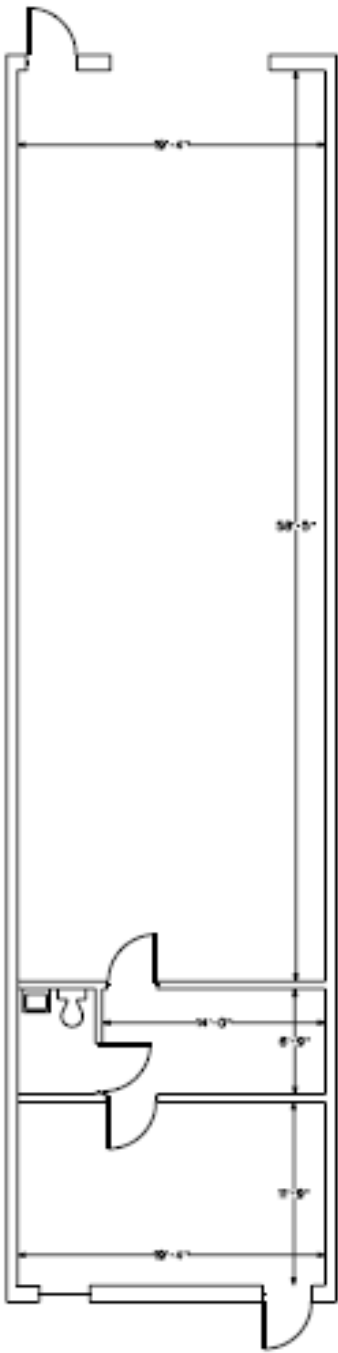


3000 Town Center  
Suite 2222  
Southfield, MI 48075  
248.262.8000  
248.358-5300 f  
www.zicorproperty.com

Information contained herein is believed to be accurate but is not warranted as to accuracy and may change or be updated without notice. Seller or landlord makes no representation as to the environmental condition of the property and recommends Purchaser's or Tenant's personal investigation.



Building 12



2183  
1,600 SF  
407 SF OFFICE