

FOR LEASE

2255 Star Court,
Rochester Hills



Office/Light Industrial

Local Ownership and Management

Features

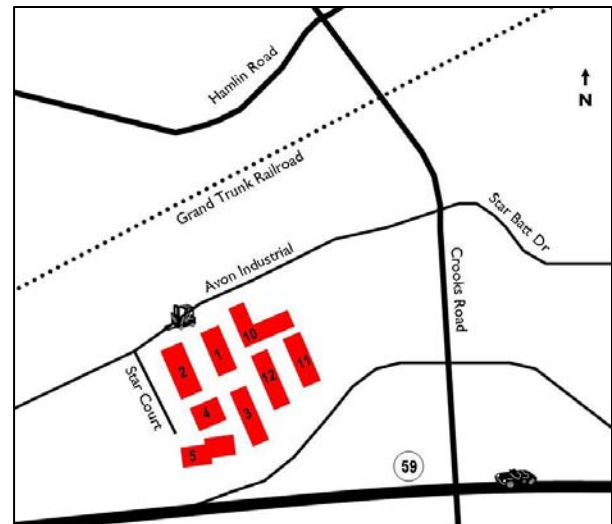
- 3,200 SF
- 1,160 SF Office
- 1 OHD
- 14' – 18' Clearance
- Newly Renovated Exterior & Landscaping
- Can Build Office to Suit
- Rochester Hills SmartZone

Location

- Northwest corner of M-59 & Crooks
- Conveniently Located to M-59 & I-75

Leasing

- Fast Occupancy
- Flexible Lease Terms
- Competitive Rates - \$5.95 gross / \$1,587/mo.



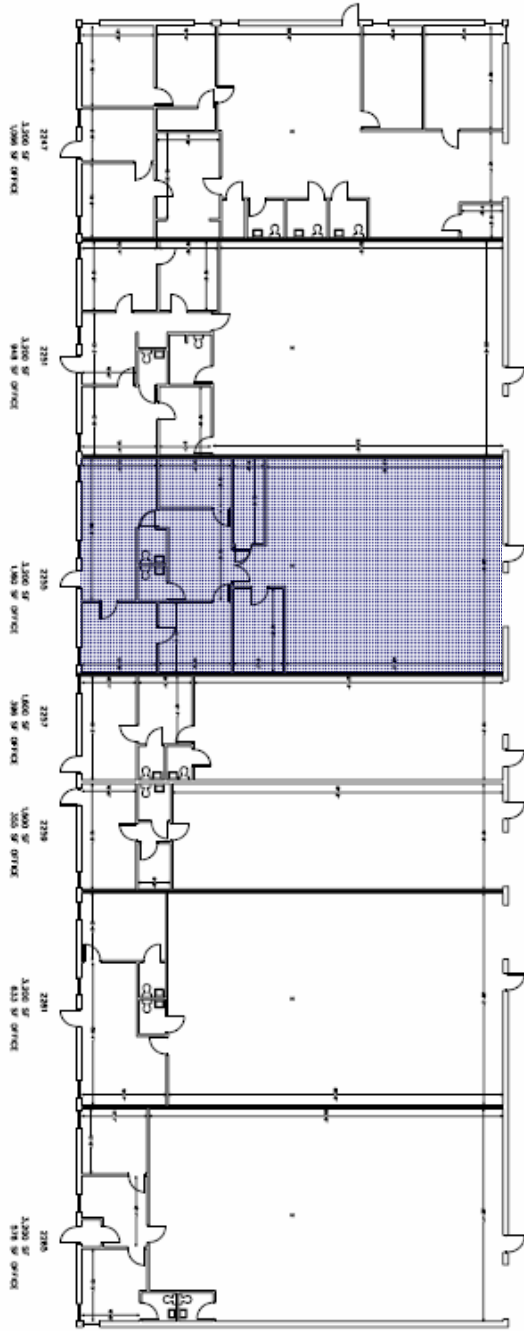
Please contact:

Tyson Butts
Corporate Leasing Manager
248.331.0215
tbutts@pa-cres.com

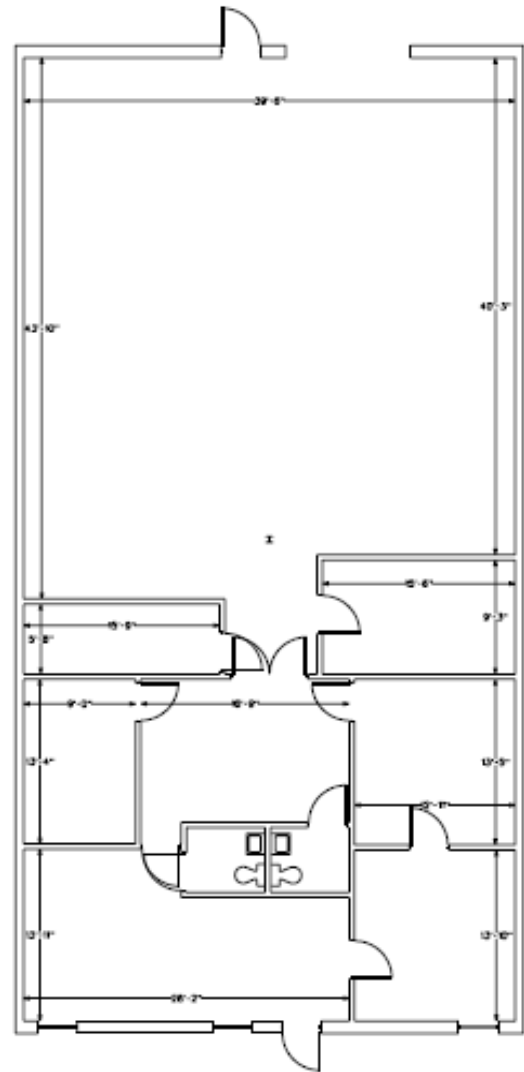


3000 Town Center
Suite 2222
Southfield, MI 48075
248.331-0215
248.358-5300 f
www.zicorproperty.com

Information contained herein is believed to be accurate but is not warranted as to accuracy and may change or be updated without notice. Seller or landlord makes no representation as to the environmental condition of the property and recommends Purchaser's or Tenant's personal investigation.



Building 3



2255
3,200 SF
1,160 SF OFFICE

