

FOR LEASE

30938 Industrial Road,
Livonia



Office/Light Industrial

Local Ownership and Management

Features

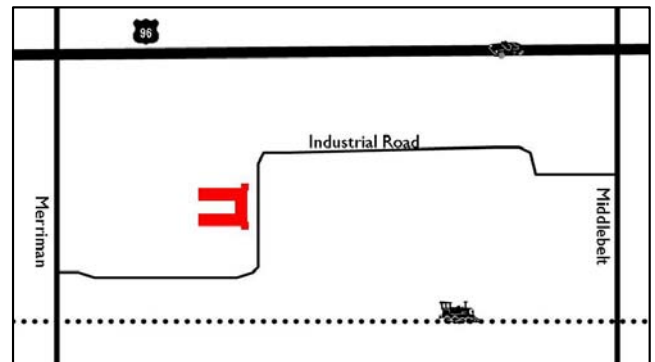
- 5,000 SF
- 1,225 SF Office
- (1) 12' X 14' OHD & (1) 10' X 10' Truckwell
- 16' – 18' Clearance
- Newly Landscaped
- Can Build Office to Suit
- Ample Parking

Location

- Just South of I-96 Between Merriman and Middlebelt
- Conveniently Located to I-96, I-275 and Telegraph

Leasing

- Fast Occupancy
- Flexible Lease Terms
- Competitive Rates - \$6.50 gross / \$2,708/mo.



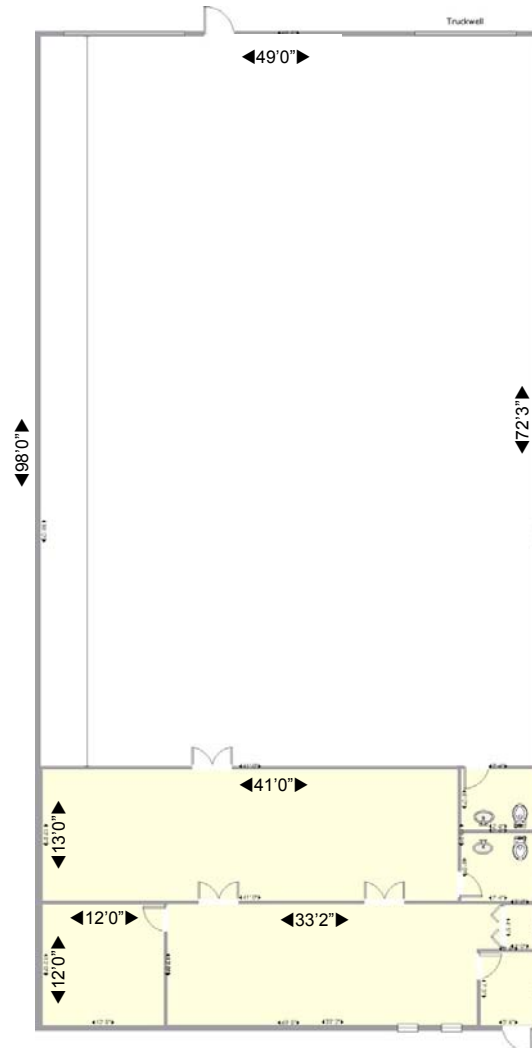
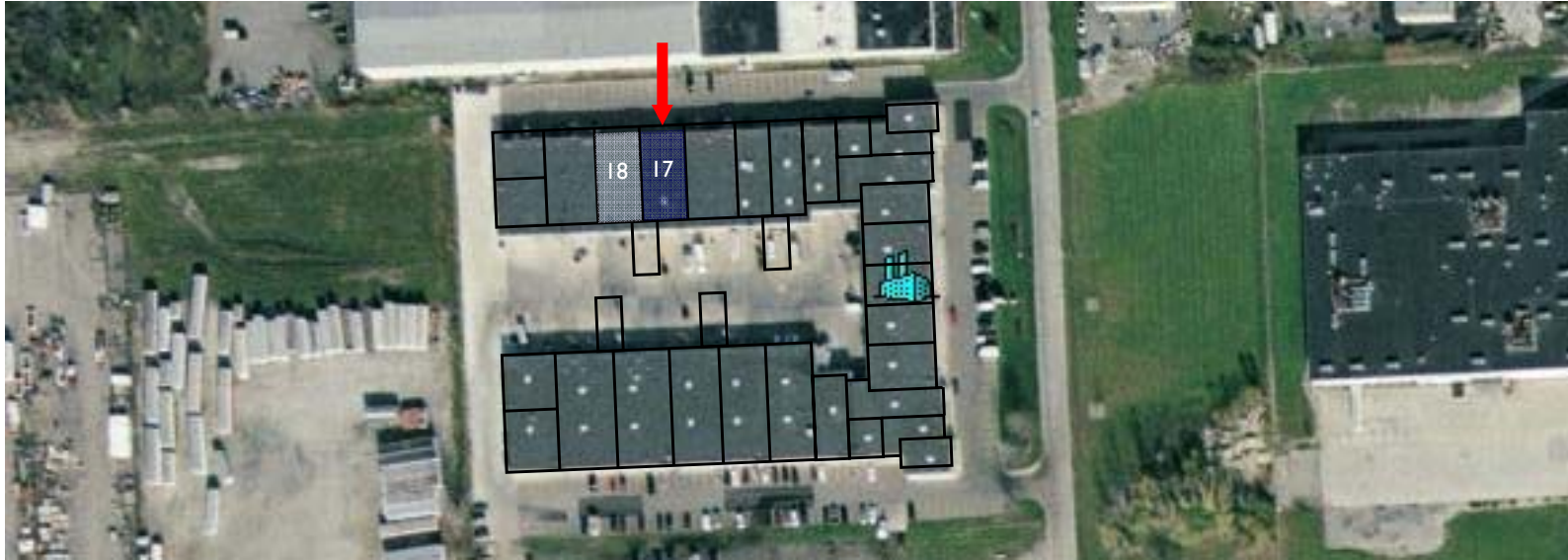
Please contact:

Tyson Butts
Corporate Leasing Manager
248.331.0215
tbutts@gvadetroit.com



26100 American Drive
Suite 600
Southfield, MI 48034
248.262.8000
248.262.8013 f
www.zicorproperty.com

Information contained herein is believed to be accurate but is not warranted as to accuracy and may change or be updated without notice. Seller or landlord makes no representation as to the environmental condition of the property and recommends Purchaser's or Tenant's personal investigation.



Unit 17

Dimensions are approximate and should be verified by Tenant.