

# FOR LEASE

30964 Industrial Road,  
Livonia



Office/Light Industrial

Local Ownership and Management

## Features

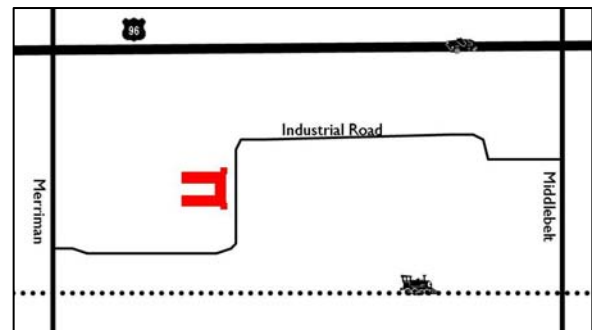
- 7,105 SF
- (1) 12' X 14' OHD & (1) 10' X 12' Truckwell
- 16' – 18' Clearance
- Newly Landscaped
- Office 1,150 SF
- Ample Parking

## Location

- Just South of I-96 Between Merriman and Middlebelt
- Conveniently Located to I-96, I-275 and Telegraph

## Leasing

- Fast Occupancy
- Flexible Lease Terms
- Competitive Rates - \$6.50 gross / \$3,848/mo.



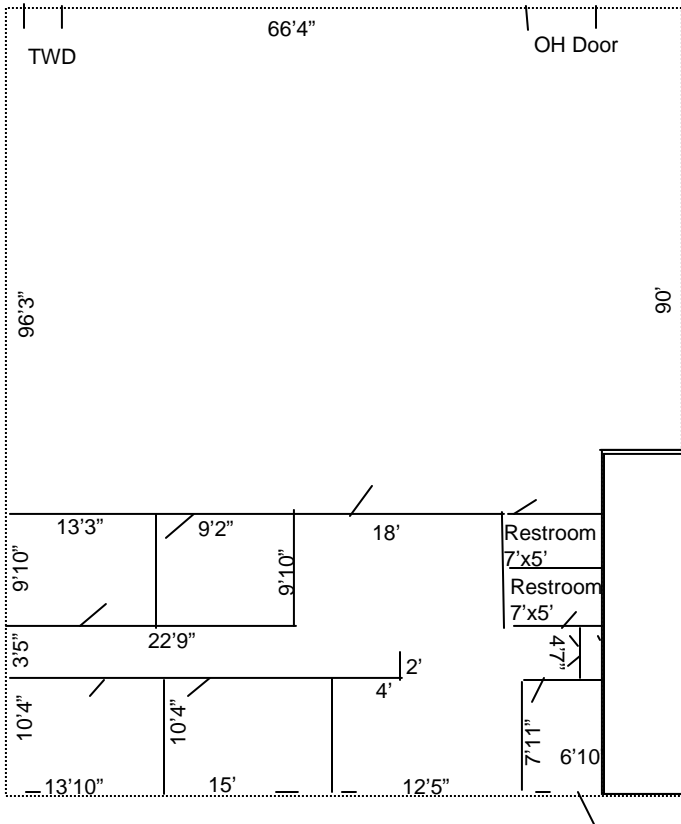
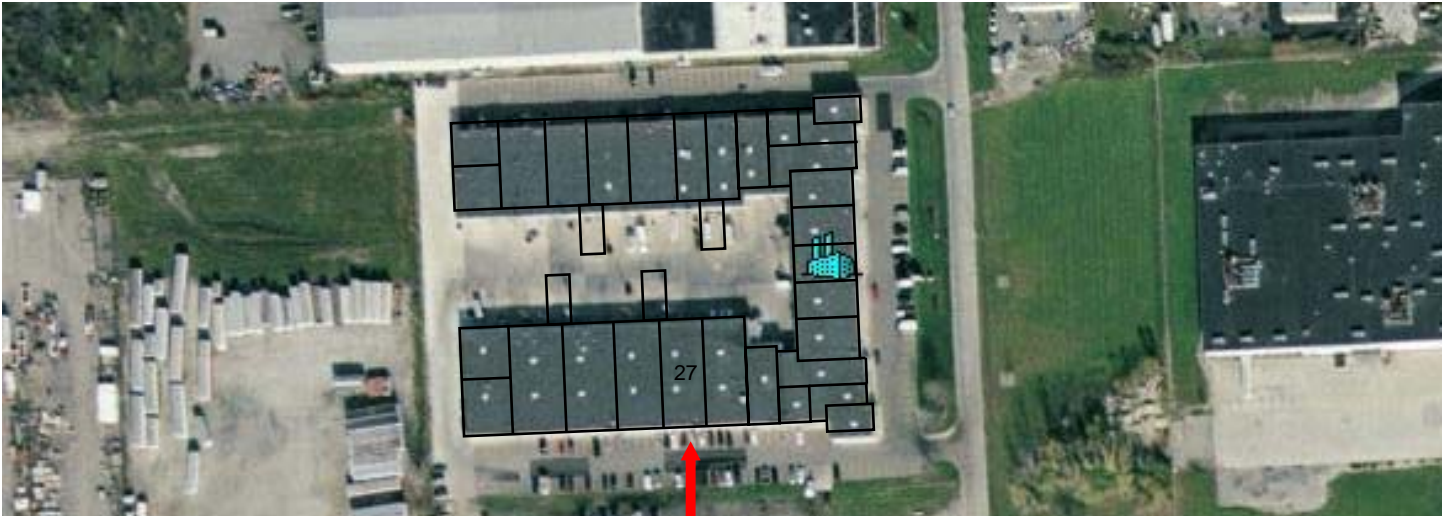
## Please contact:

Tyson Butts  
Corporate Leasing Manager  
248.331.0215  
tbutts@pa-cres.com



3000 Town Center  
Suite 2222  
Southfield, MI 48075  
248.262.8000  
248.262.8013 f  
www.zicorproperty.com

Information contained herein is believed to be accurate but is not warranted as to accuracy and may change or be updated without notice. Seller or landlord makes no representation as to the environmental condition of the property and recommends Purchaser's or Tenant's personal investigation.



Dimensions are approximate and should be verified by Tenant.

## Unit 4

Tyson Butts  
248.331.0215  
tbutts@gvadetroit.com

3000 Town Center, Ste 2222  
Southfield, MI 48075  
www.zicorproperty.com