

FOR LEASE

32522-26 Dequindre,
Warren



Office/Light Industrial

Local Ownership and Management

Features

- 5,600 SF
- 2 OHDs
- 375 SF Office
- 16' – 18' Clearance
- 240 Volt 3-phase Power
- Newly Landscaped Entryway
- Can Build Office to Suit
- Ample Parking

Location

- East Side of Dequindre Just South of I4 Mile
- Conveniently Located to I-696 & I-75

Leasing

- Fast Occupancy
- Flexible Lease Terms
- Competitive Rates - \$6.50 gross / \$3,033/mo.



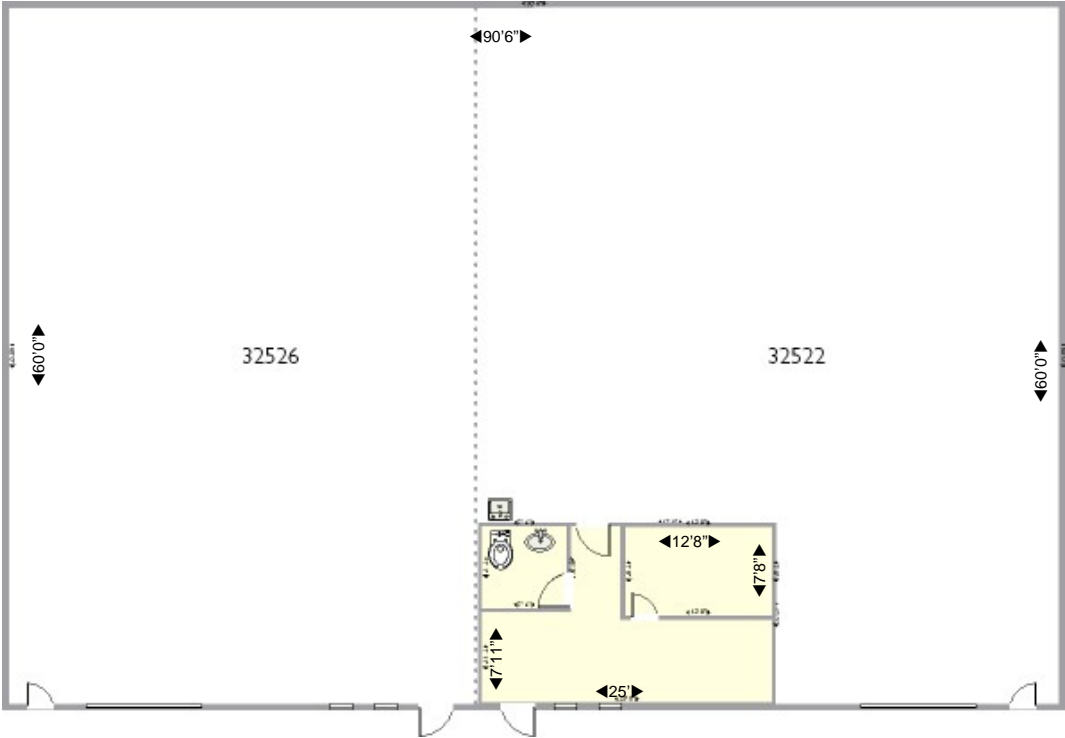
Please contact:

Tyson Butts
Corporate Leasing Manager
248.331.0215
tbutts@gvadetroit.com



3000 Town Center
Suite 2222
Southfield, MI 48075
248.262.8000
248.262.8013 f
www.zicorproperty.com

Information contained herein is believed to be accurate but is not warranted as to accuracy and may change or be updated without notice. Seller or landlord makes no representation as to the environmental condition of the property and recommends Purchaser's or Tenant's personal investigation.



Dimensions are approximate and should be verified by Tenant.

Tyson Butts
248.331.0215
tbutts@gvadetroit.com

3000 Town Center, Suite 2222
Southfield, MI 48075
www.zicorproperty.com