

FOR LEASE

374 Hilton
Ferndale



Office/Retail/Light Industrial

Local Ownership and Management

Features

- 1,520 Office SF
- Renovated in 2006 with New Elevator
- Multi-tenant Facility with Ample Parking
- Loft-style Office Space with Stylish Exposed Ductwork, Industrial Doors & More
- Shared Lavatories on 2nd Floor
- Choice of New Carpet or Tile
- Owner will Build Unit to Suit
- Can be Combined with Other 2nd-floor Units for up to 7,500 sf

Location

- South of Nine Mile at the NE Corner of Camden & Hilton
- Conveniently Located to I-75, I-696 & Downtown Ferndale

Leasing

- Flexible Lease Terms
- Competitive Rates – see rate chart on back



Please contact:

Tyson Butts
Corporate Leasing Manager
248.331.0215
tbutts@pa-cres.com

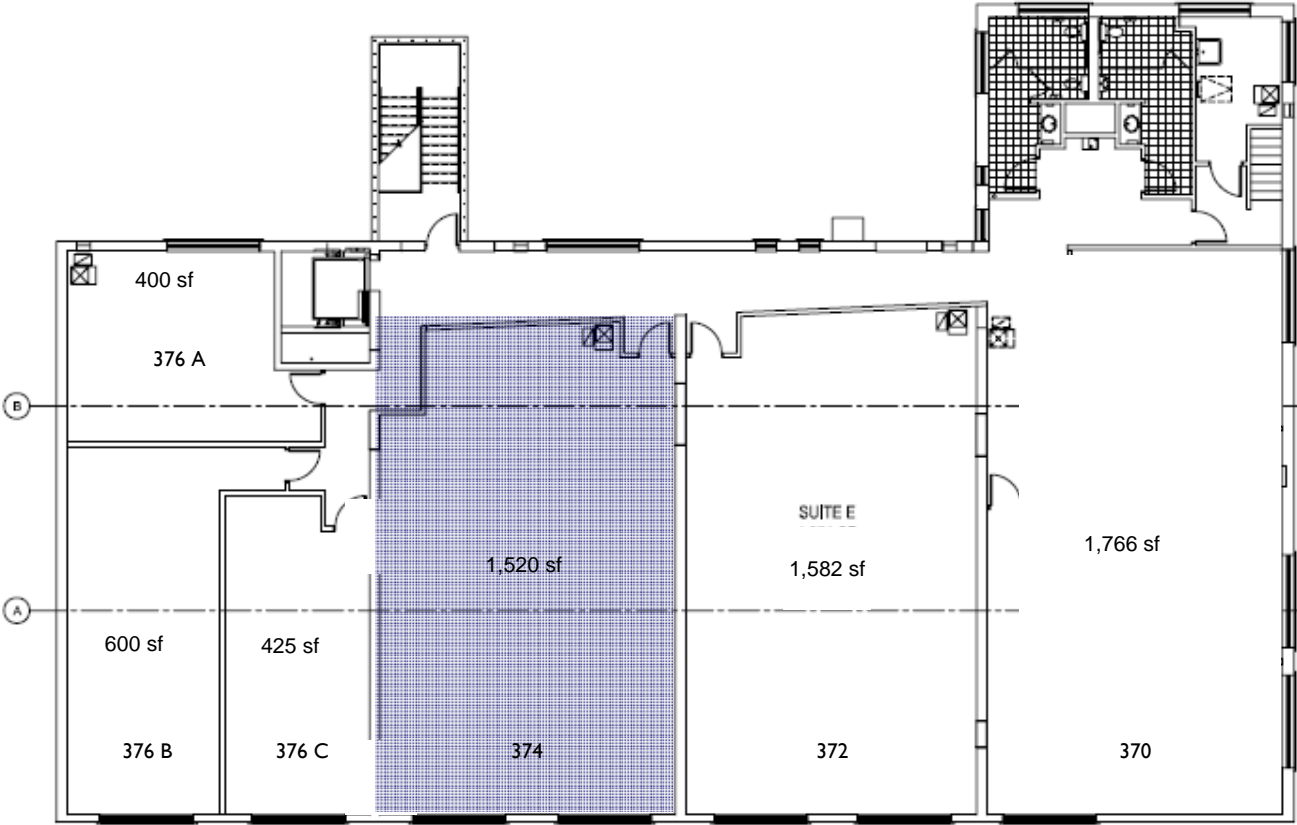


3000 Town Center
Suite 2222
Southfield, MI 48075
248.262.8000
248.262.8013 f
www.zicorproperty.com

Information contained herein is believed to be accurate but is not warranted as to accuracy and may change or be updated without notice. Seller or landlord makes no representation as to the environmental condition of the property and recommends Purchaser's or Tenant's personal investigation.

Second-floor Plan & Rate Chart

02/27/10



Build out	Includes	Office SF	Rate	Monthly
Open area	Choice of Paint, Lights, Exposed Ductwork, Choice of Tile or Carpet	1,520	\$8.50 gross	\$1,077 + utilities

Tyson Butts
 248.331.0215
 tbutts@pa-cres.com

3000 Town Center, Suite 2222
 Southfield, MI 48075
 www.zicorproperty.com