

# FOR LEASE

376C Hilton  
Ferndale



Office/Retail/Light Industrial

Local Ownership and Management

## Features

- 425 Office SF
- Renovated in 2006 with New Elevator
- Multi-tenant Facility with Ample Parking
- Loft-style Office Space with Stylish Exposed Ductwork & More
- Shared Lavatories on 2<sup>nd</sup> Floor
- New Carpeting & Freshly Painted

## Location

- South of Nine Mile at the NE Corner of Camden & Hilton
- Conveniently Located to I-75, I-696 & Downtown Ferndale

## Leasing

- Flexible Lease Terms
- Competitive Rates –  
\$12.00 gross / \$425/mo. + utilities



## Please contact:

Tyson Butts  
Corporate Leasing Manager  
248.331.0215  
tbutts@pa-cres.com

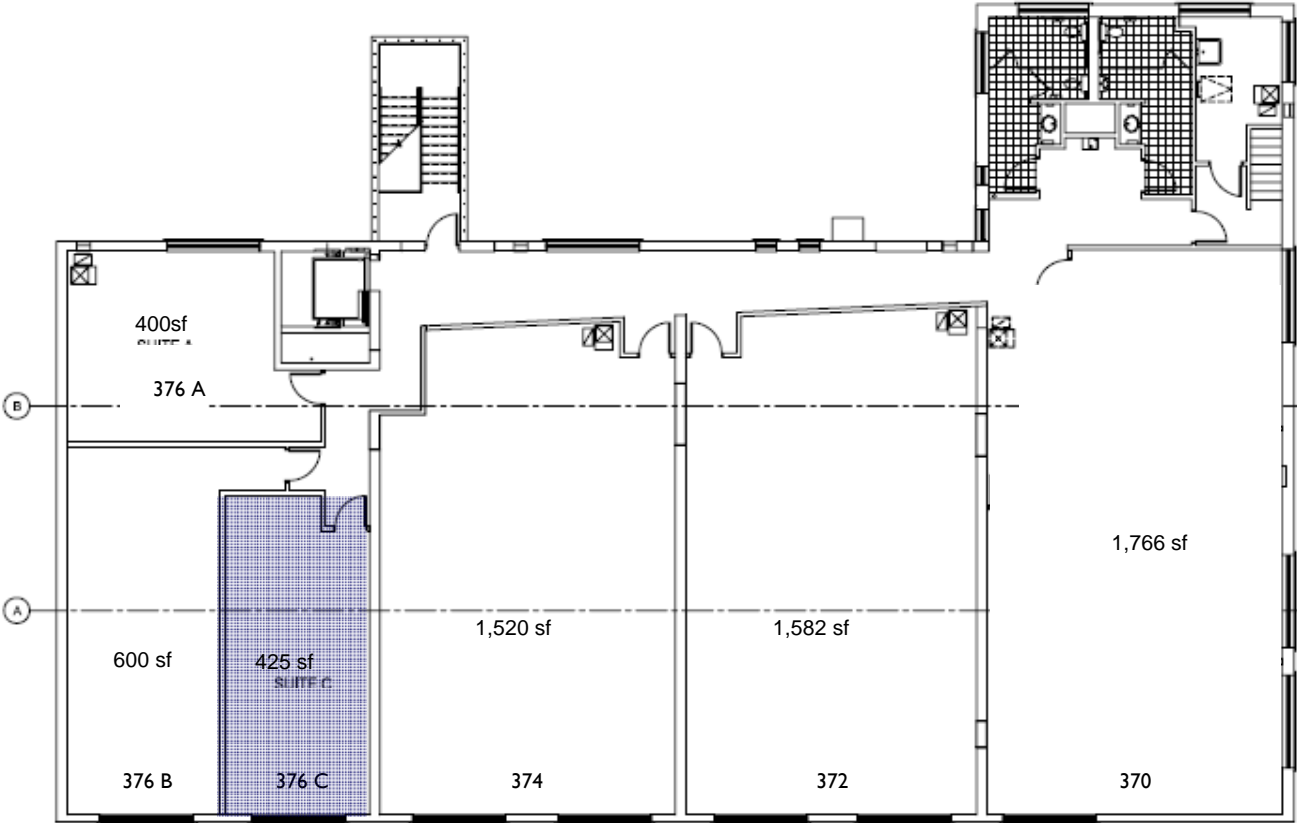


3000 Town Center  
Suite 2222  
Southfield, MI 48075  
248.262.8000  
248.262.8013 f  
www.zicorproperty.com

Information contained herein is believed to be accurate but is not warranted as to accuracy and may change or be updated without notice. Seller or landlord makes no representation as to the environmental condition of the property and recommends Purchaser's or Tenant's personal investigation.

# Second-floor Plan & Interior Photos

02/27/10



Tyson Butts  
248.331.0215  
tbutts@pa-cres.com

3000 Town Center, Suite 2222  
Southfield, MI 48075  
www.zicorproperty.com